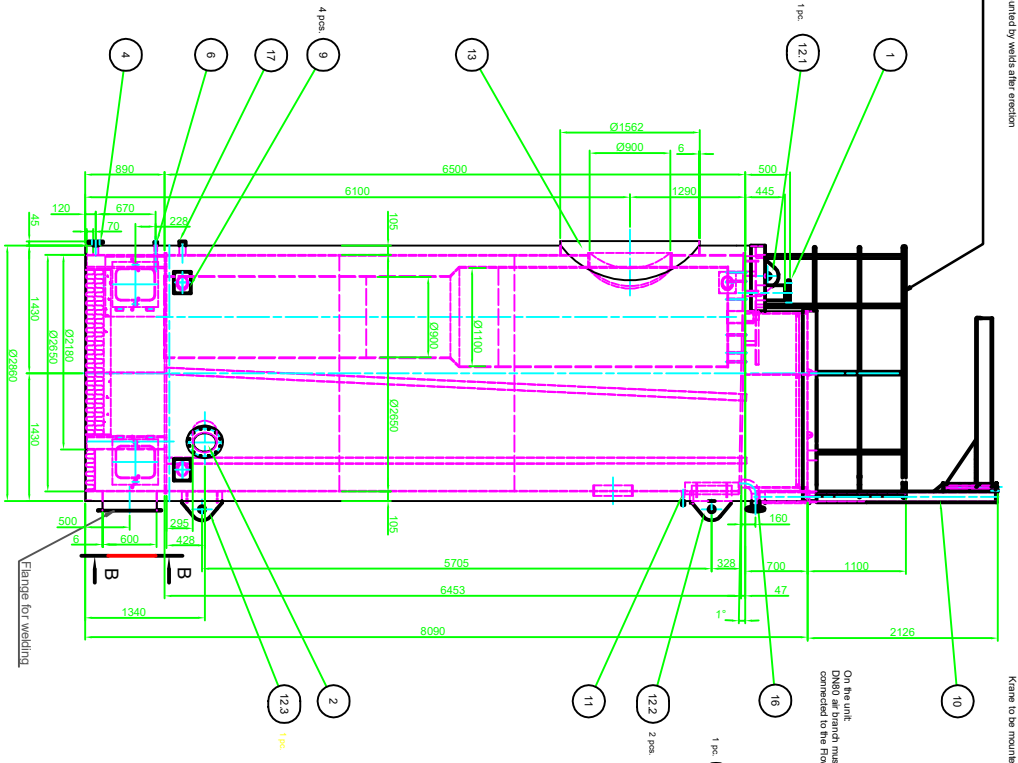
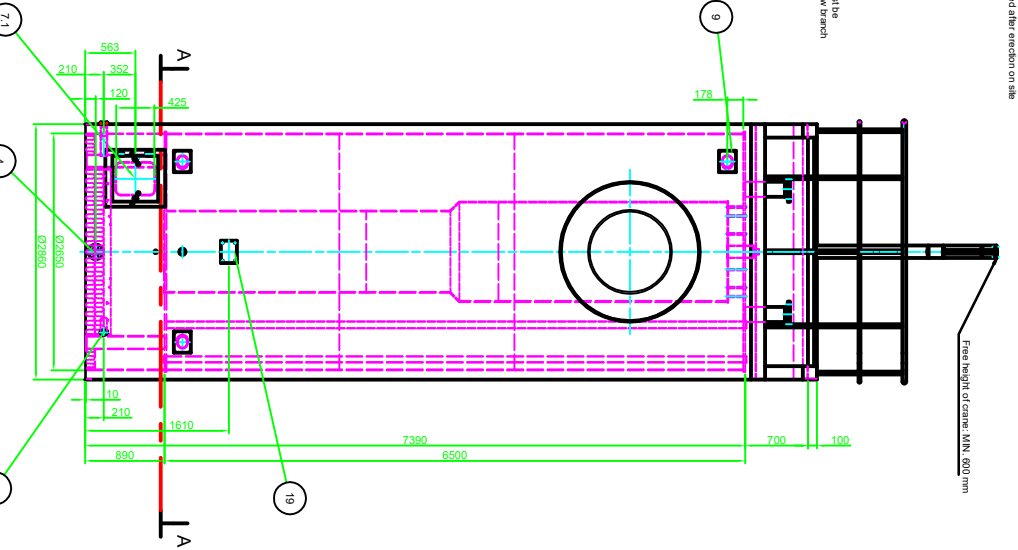
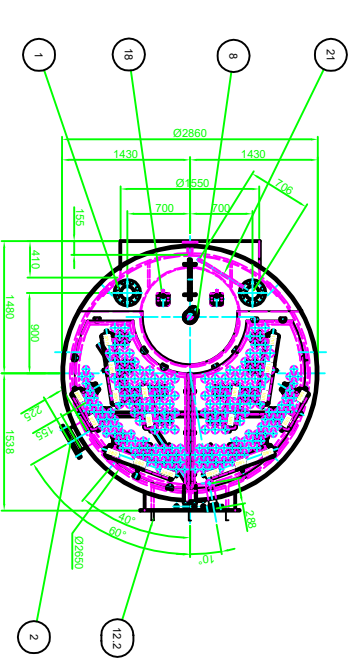


Rainfalls to be mounted by welds after erection on site

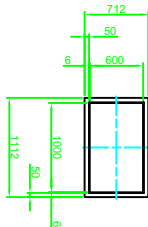
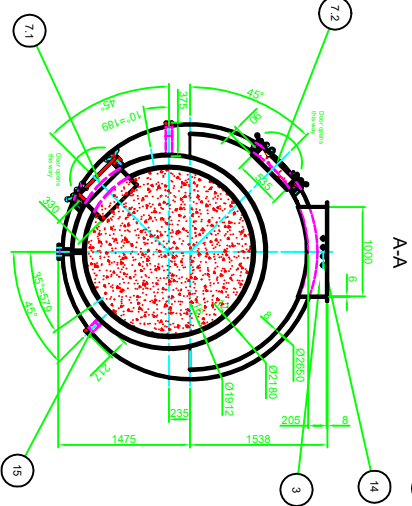


Crane to be mounted after erection on site

On the unit DN80 air branch must be connected to the Flow branch



Free height of crane: MIN. 6000 mm



B-B

VP 13.12.6500
Order No. 14-1051

Material without number (No.)	Materialcode (I)	Total Qty
21.1 Air branch	Ø28 8x3 2	61880
19.1 Boiler plate		
18.2 Securing bracket		
17 Drain for water (Danstoker use)	DN80 PN16	
16.1 Top drain for air	DIN 2833	
15.2 Wires for inspection		
14.4 Wires	3/4"	
13.1 Frame for gasneck		
12.4 Lifting eyes	3/4"	
11.1 Drain for air (Danstoker use)	MAX. 500kg	
10.1 Crane	MAX. 500kg	
9.5 Hand holes for inspection	Ø90	
8.1 Observation	535 x 425	
7.2 Inspection doors	1/2"	
6.1 Manif for smokecess instrument	DN50 PN16	DIN 2833
4.1 Water drain valve / Blow down	1000 x 650	
3.1 Smoke box / Outlet	DN250 PN16	DIN 2833
2.1 Return branch	DN150 PN16	DIN 2833
1.2 Flow branch	Welding	Standard

Date	Revision	Name



Industrial Heat Exchangers
Tel. +44 (0)2031 001000, Fax. 02031 1111

Arrangement drawing

Type: VP 13.12.6500
Design pressure: 12.0 barg
Test pressure: acc. PED 97/23/EC
Max. temperature: 150°C

A1-184-0277

Total weight: EN 30853 Class C