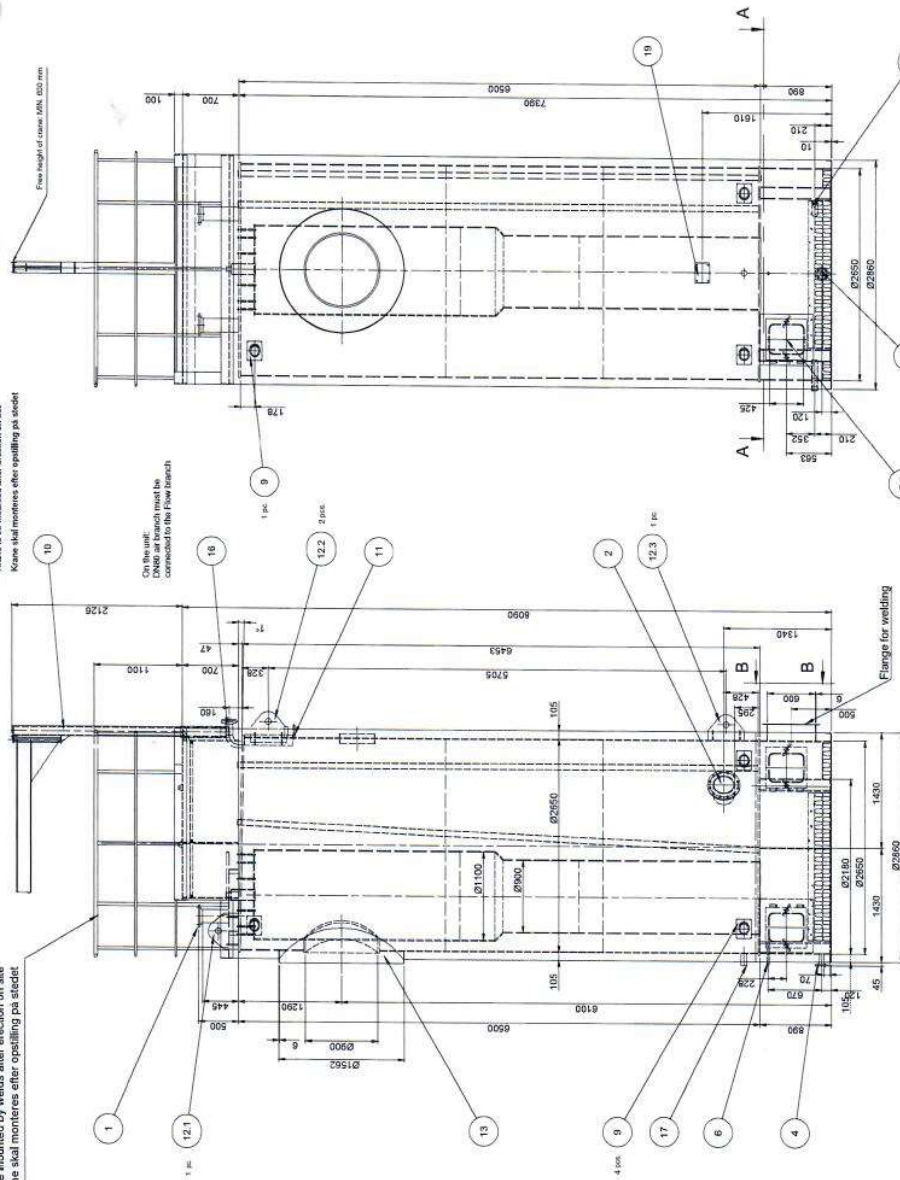
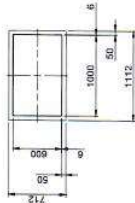


Railings to be mounted by welds after erection on site
Kranje skal monteres efter opstilling på stedet

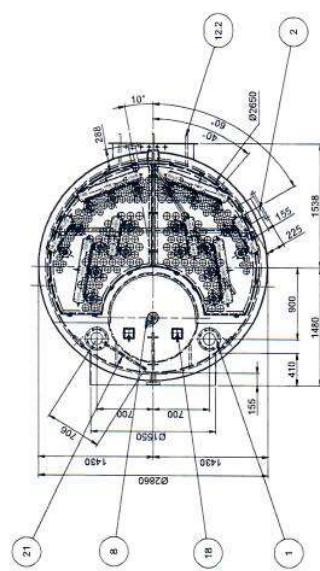
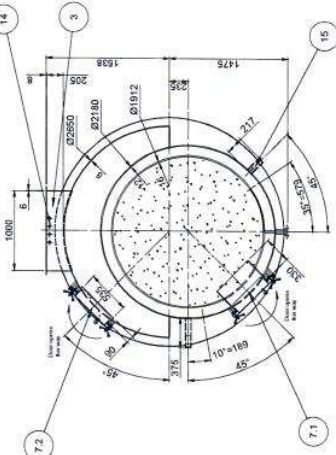
Krane to be mounted after erection on site
Kranje skal monteres efter opstilling på stedet



B-B



A-A



VP 13.12.6500
Order No. 14-1051

Weight without water (kg)	Water content (l)	Total (kg)
21 1	28142	28446
19 1	Ø25 5x3.2	Ø1990
18 1	Boiler plate	
18 2	Securing bracket	
17 1	Drain for water (Danstoker use)	2"
16 1	Top drain for air	DN80 PN16
15 2	Muffs for inspection	2"
14 4	Muffs	3/4"
13 1	Frame for gasneck	
12 4	Lifting eyes	3/4"
11 1	Drain for air (Danstoker use)	3/4"
10 1	Crane	MAX. 500 kg
9 1	Hand holes for inspection	150 x 100
8 1	Observation	Ø950
7 2	Inspection doors	555 x 425
6 1	Muff for smokegas instrument	7/8"
5 1	Water drain valve / Blow down	DN50 PN16
4 1	Smokebox / Outlet	1000 x 600
3 1	Return branch	DN250 PN16
2 1	Flow branch	DN150 PN16
1 1	Material	Standard

danstoker
The Danstoker Group has been established in 1971

Arrangement drawing
Type: VP 13.12.6500
Design pressure : 12.0 barg
Test pressure : acc. PED 97/23/EC
Max. temperature : 150°C

V A1 - 184-0277

Denise Engineering is our exclusive UK and Ireland distributor for Danstoker products. All other Danstoker products are available from our website. This drawing is our property and may not be reproduced or used for any other purpose without the written consent of Denise Engineering.